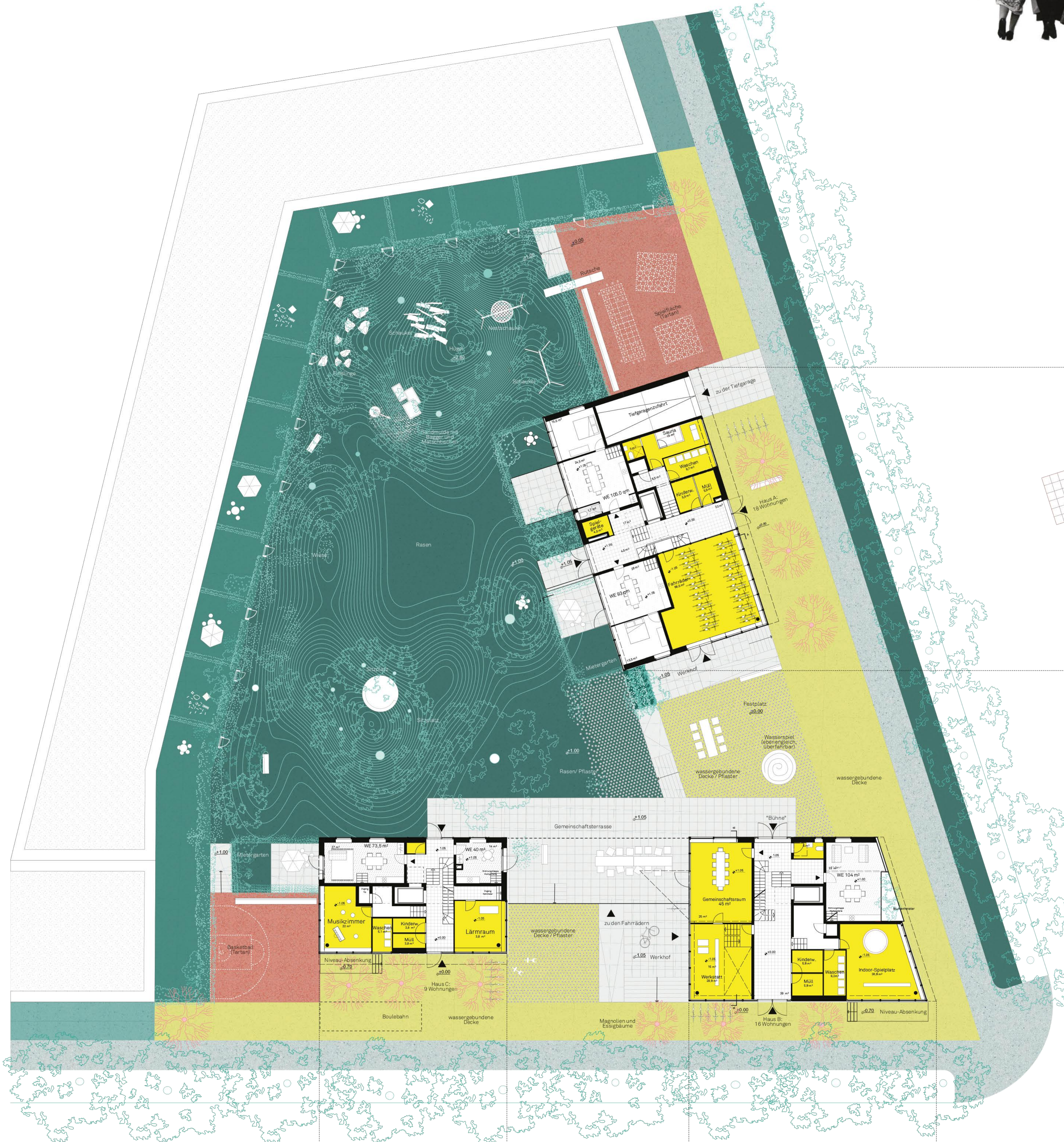
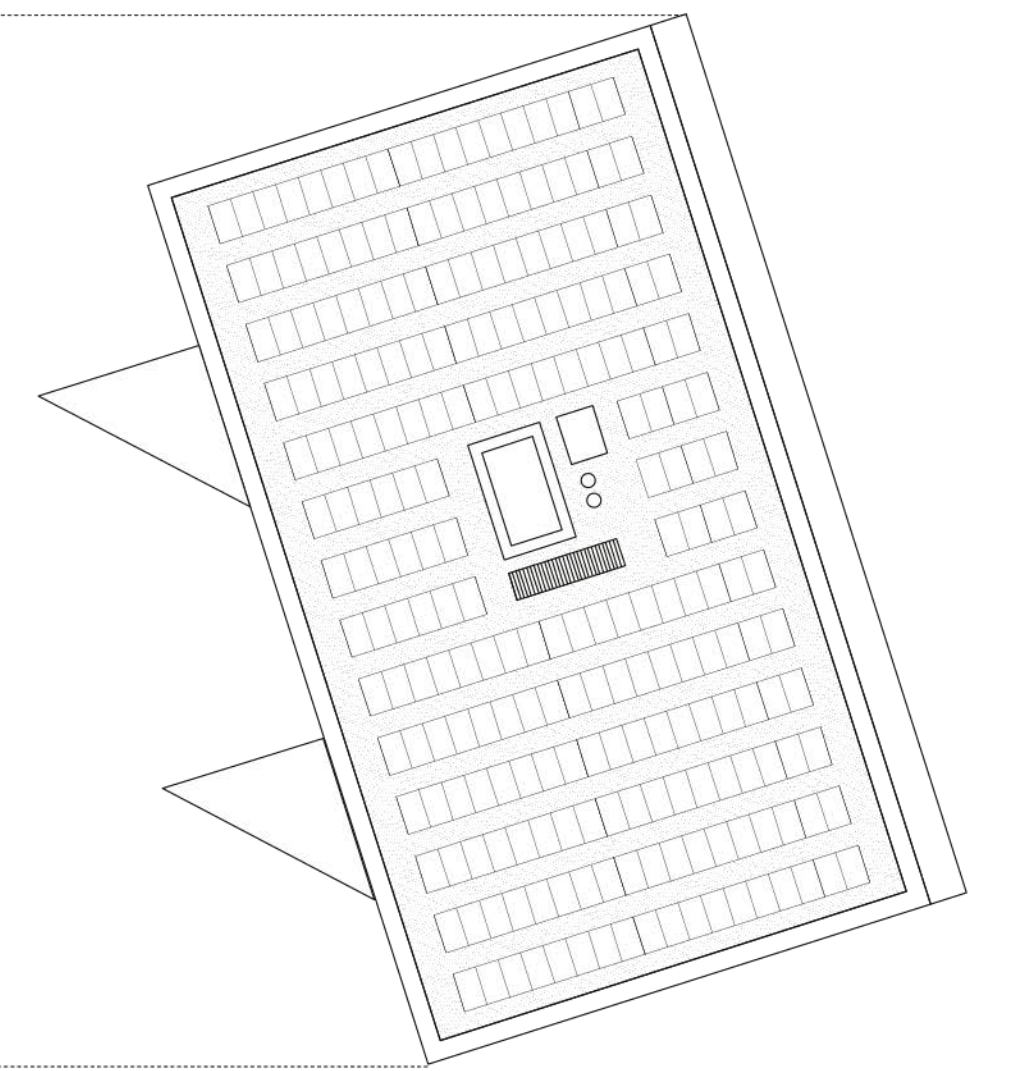


Lageplan 1:1000



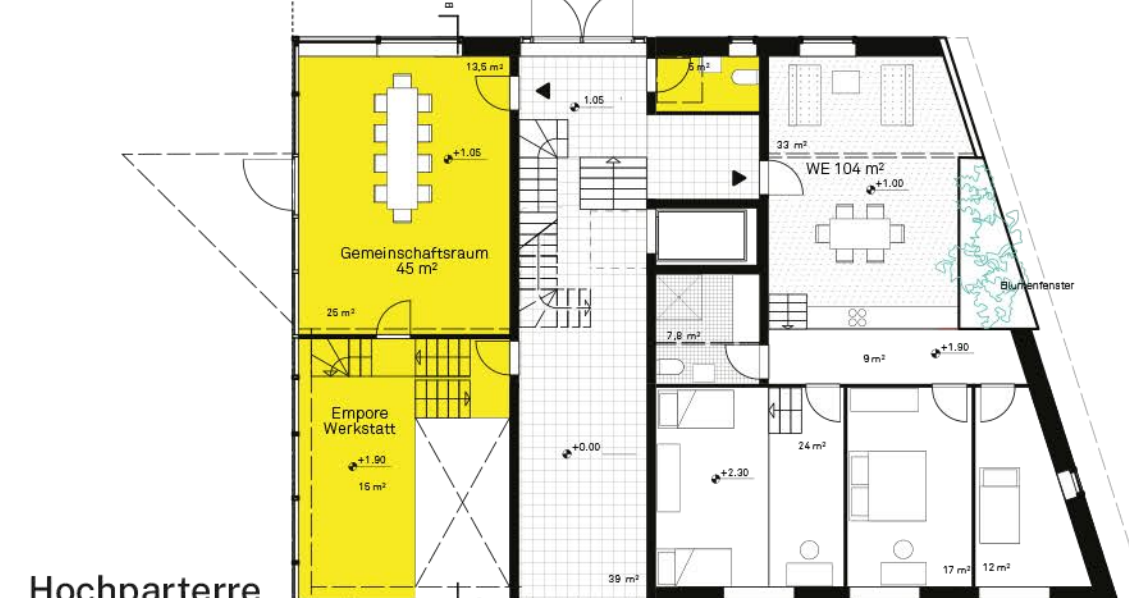
Hochparterre



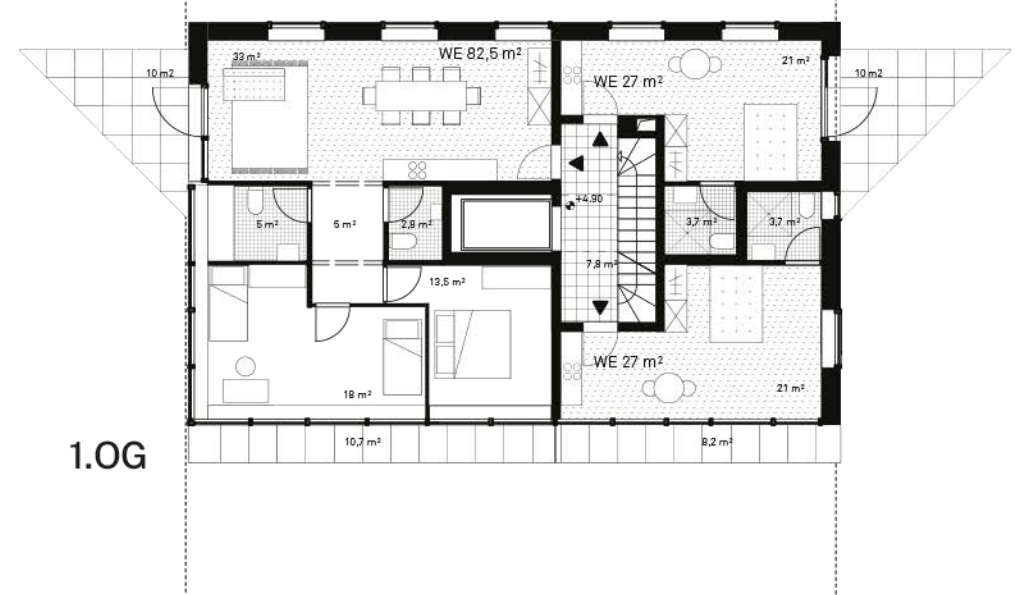
Dachaufsicht



Hochparterre



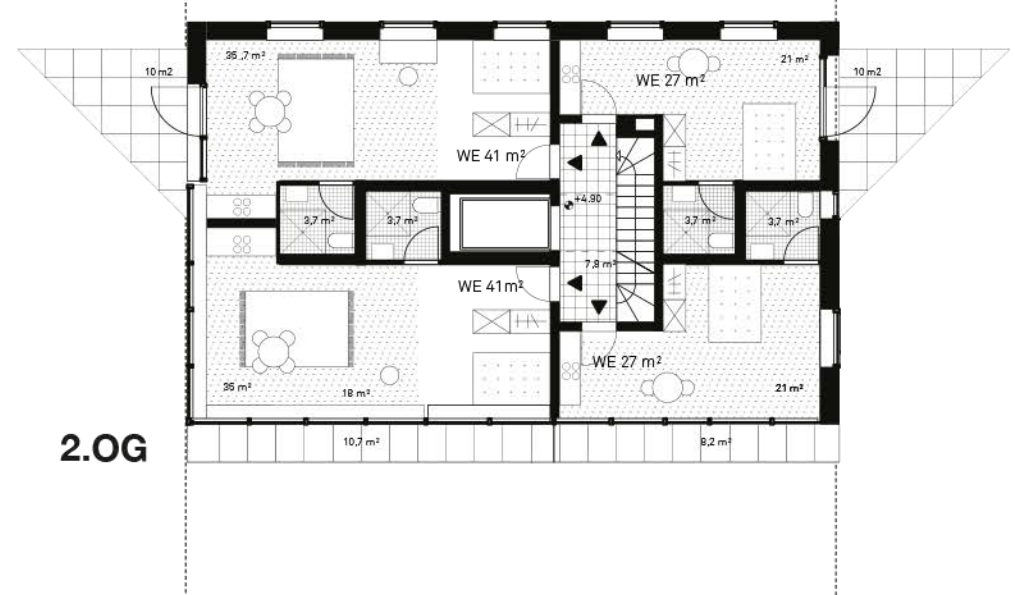
Hochparterre



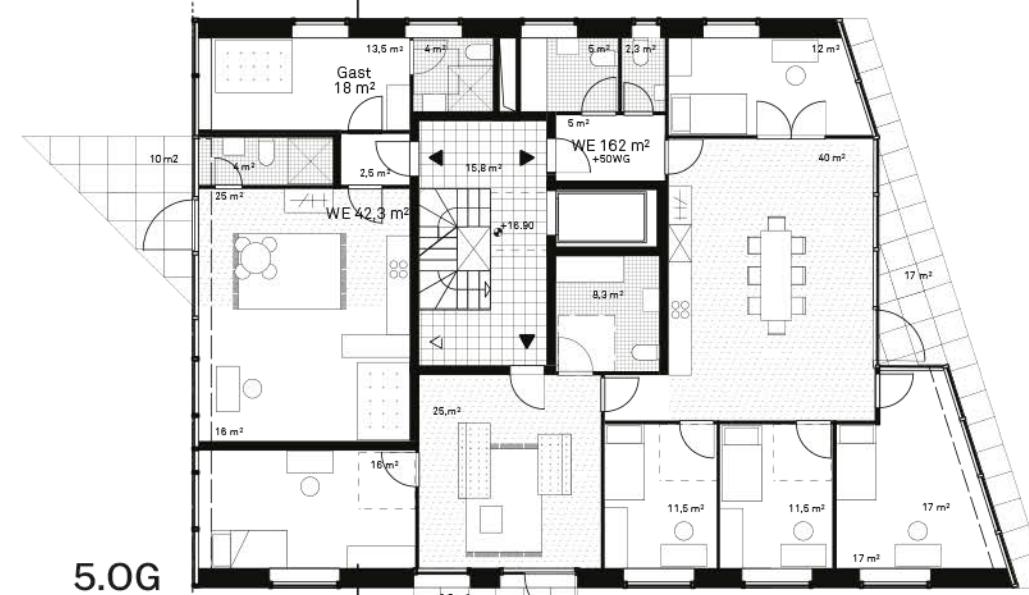
1.OG



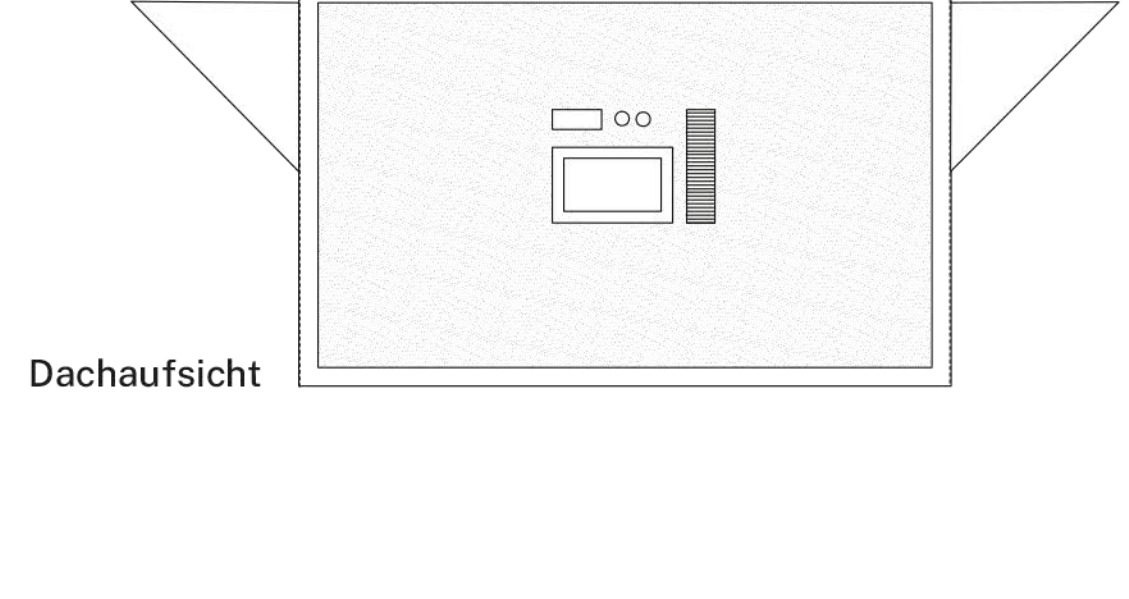
1.-4.OG



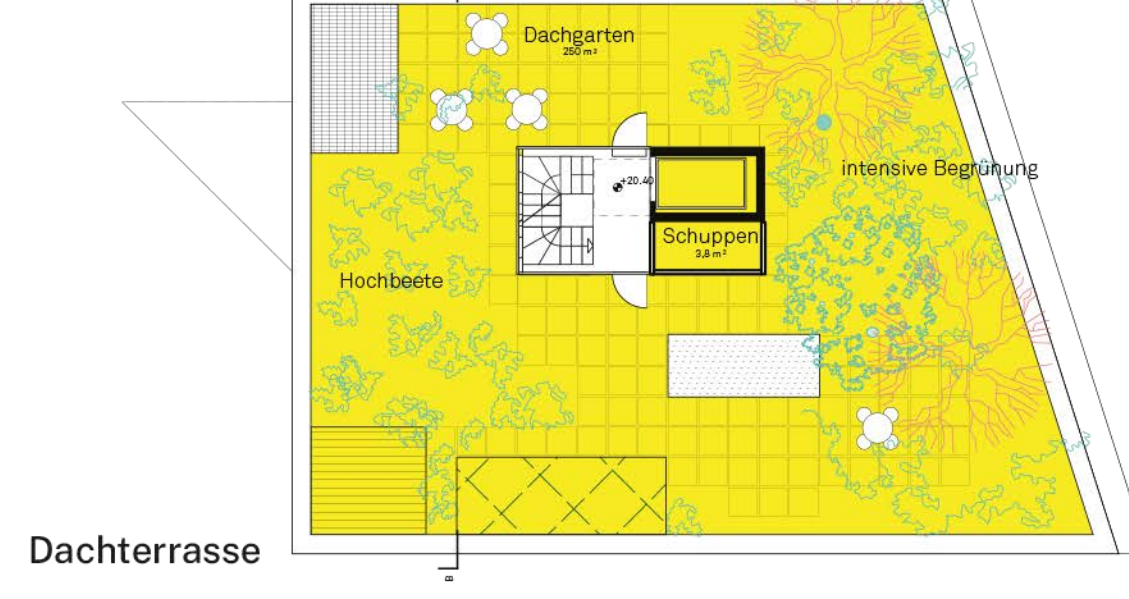
2.OG



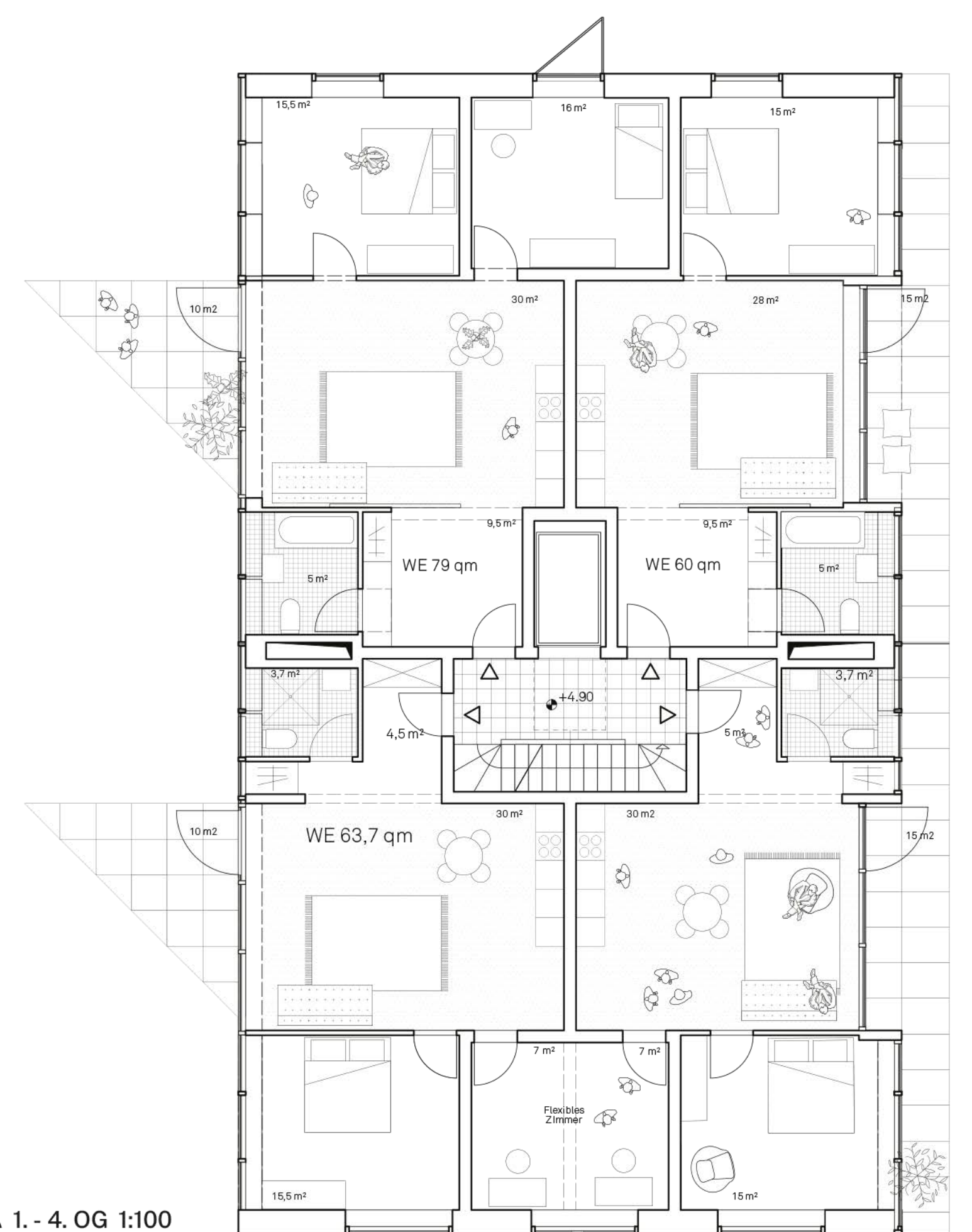
5.OG



Dachaufsicht



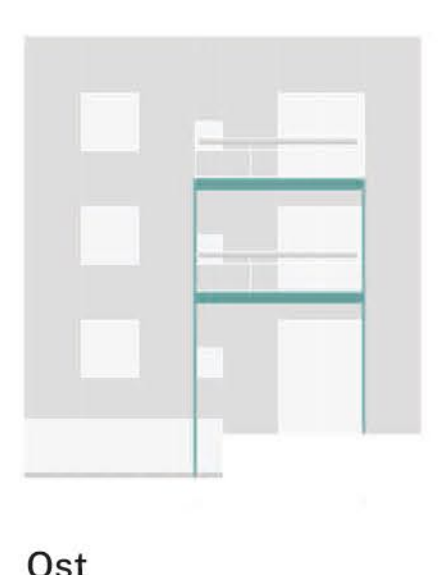
Dachterrasse



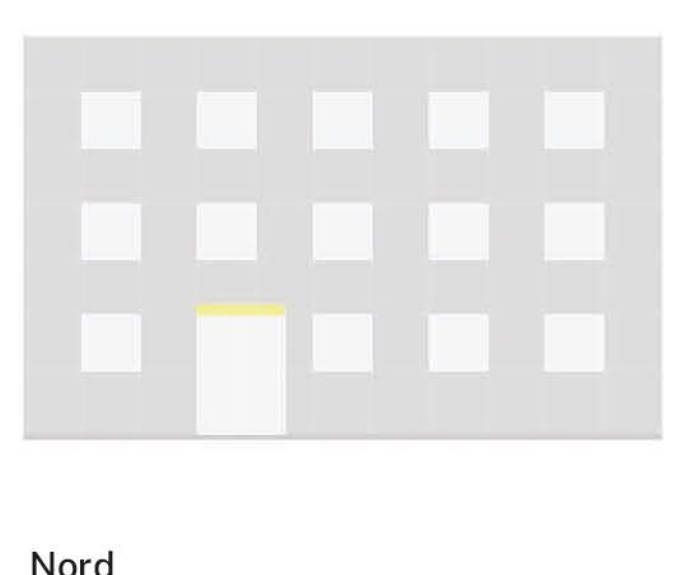
Haus A 1.-4.OG 1:100



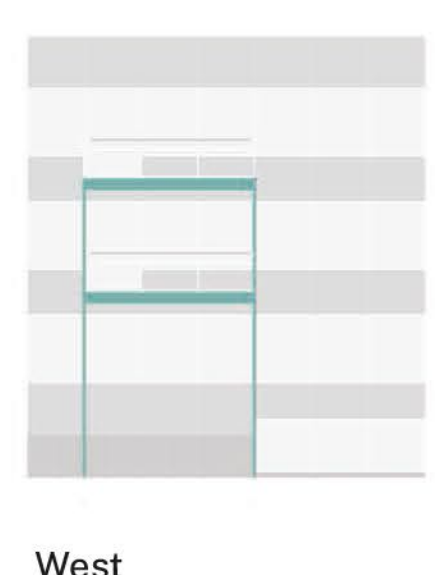
Haus C Süd



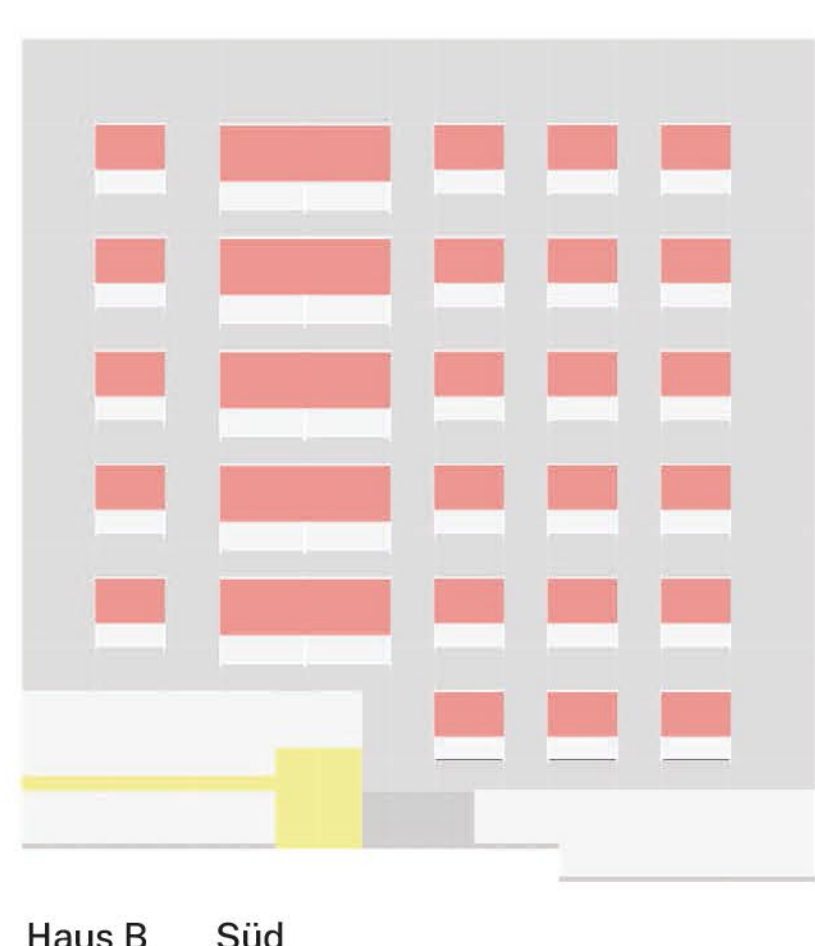
Ost



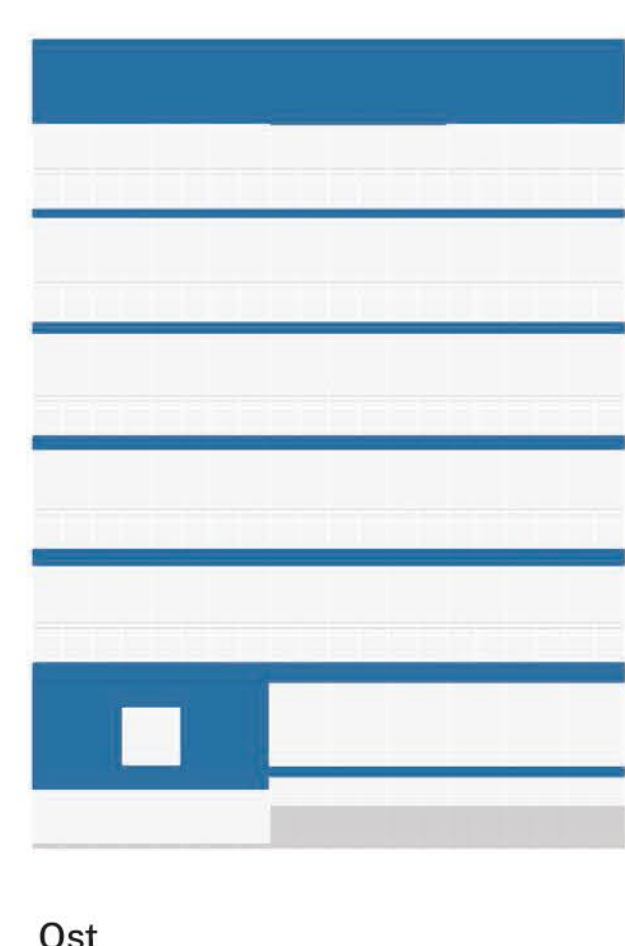
Nord



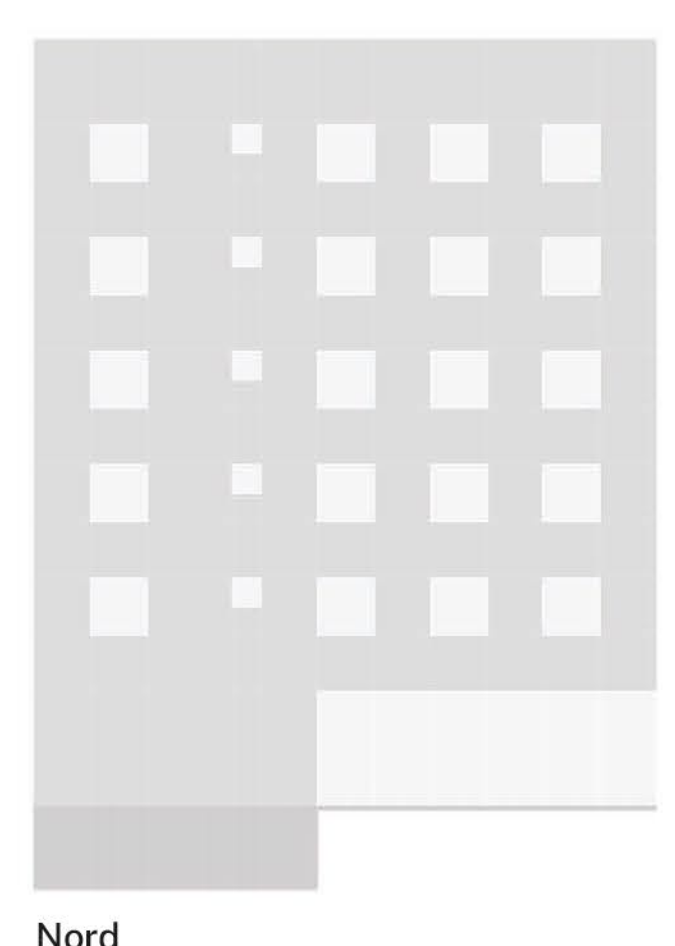
West



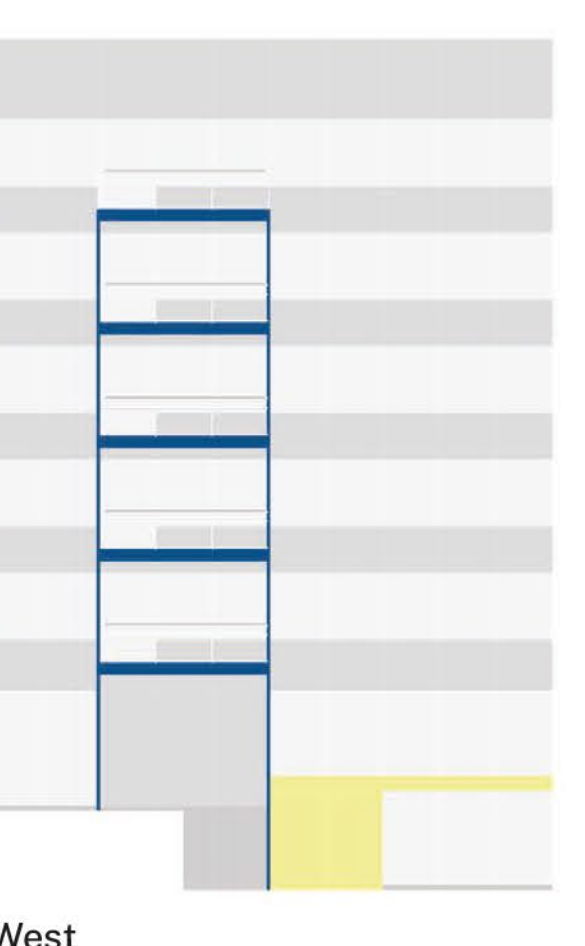
Haus B Süd



Ost



Nord



West

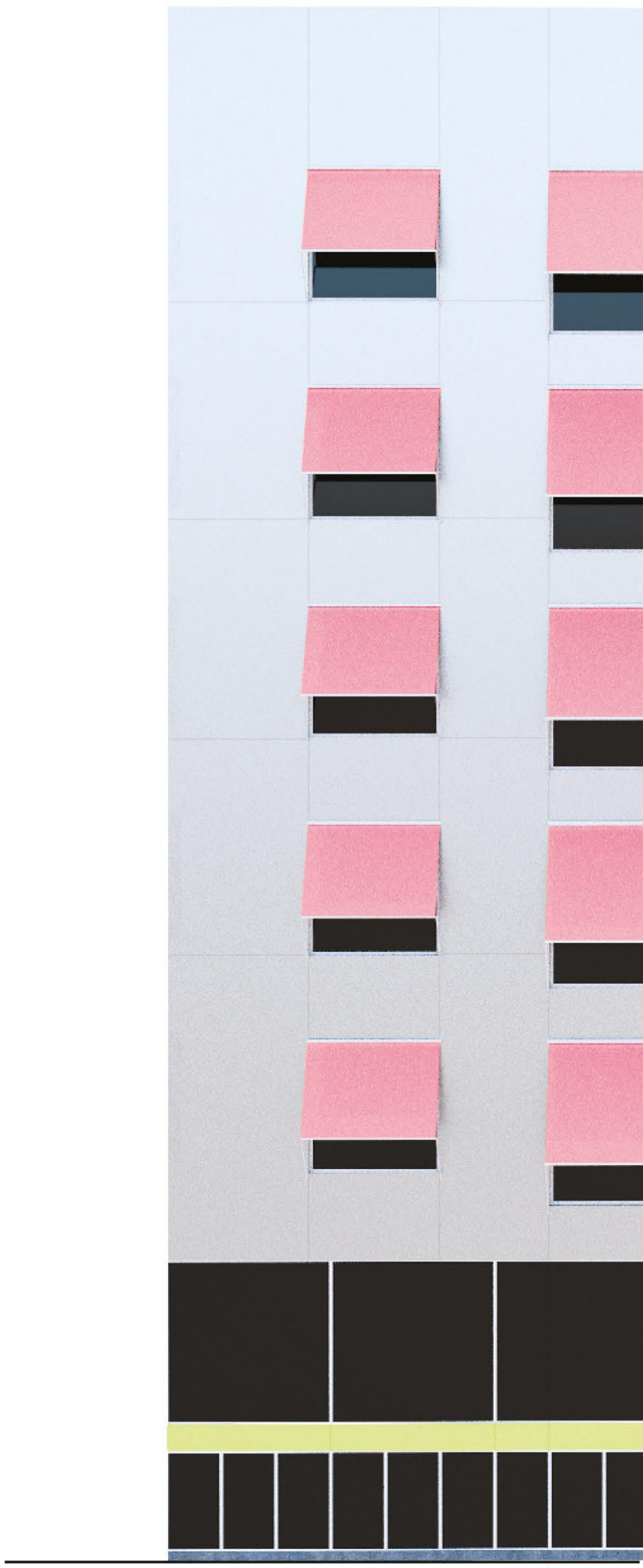




Garten



Stadt



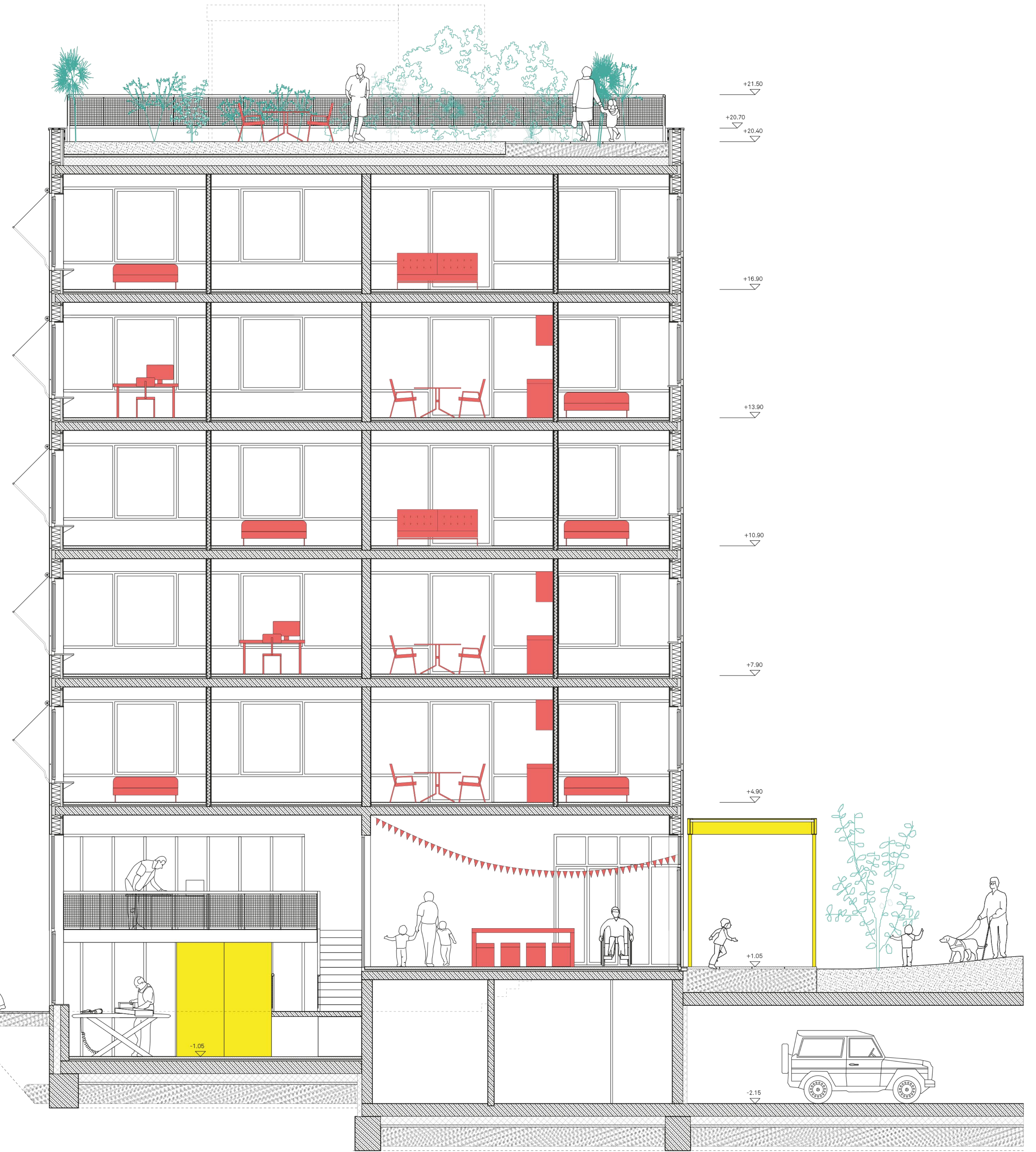
**Dachaufbau:**  
 Vegetationsdecke 30 cm  
 Drainageplatte 6 cm  
 Blumengießanlage 20 cm  
 Aufbaudämmung 20 cm  
 Stahlbetondecke 20 cm

**Fassade:**  
 Alucobond-Paneel verklebt 8 cm  
 Mineralwolleplatte 8 cm  
 Unterputzputz 20 cm  
 Holz-Alu-Verbund-Elemente 20 cm  
 Dampfsperre 0,2 mm  
 Mineralwolleplatte 8 cm  
 Gipskarton doppelt beplankt 2,5 cm

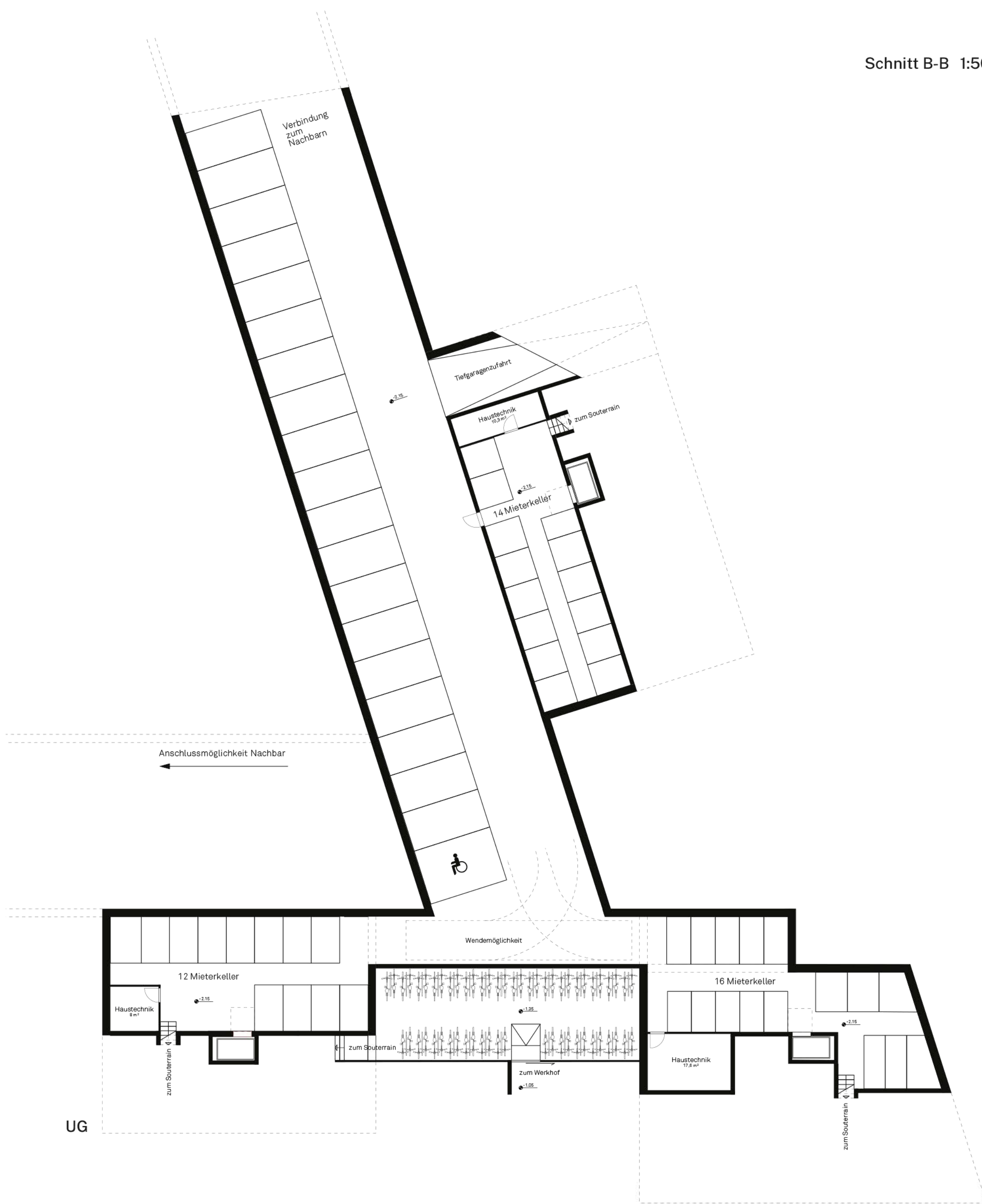
**Fenster:**  
 Holzfenster  
 Außenliegende Sonnenschutz:  
 Fallarm-Markisen

**Fußbodenaufbau:**  
 Zementestrich isoliert 8 cm  
 Trittschalldämmung 4 cm  
 Stahlbetondecke 20 cm

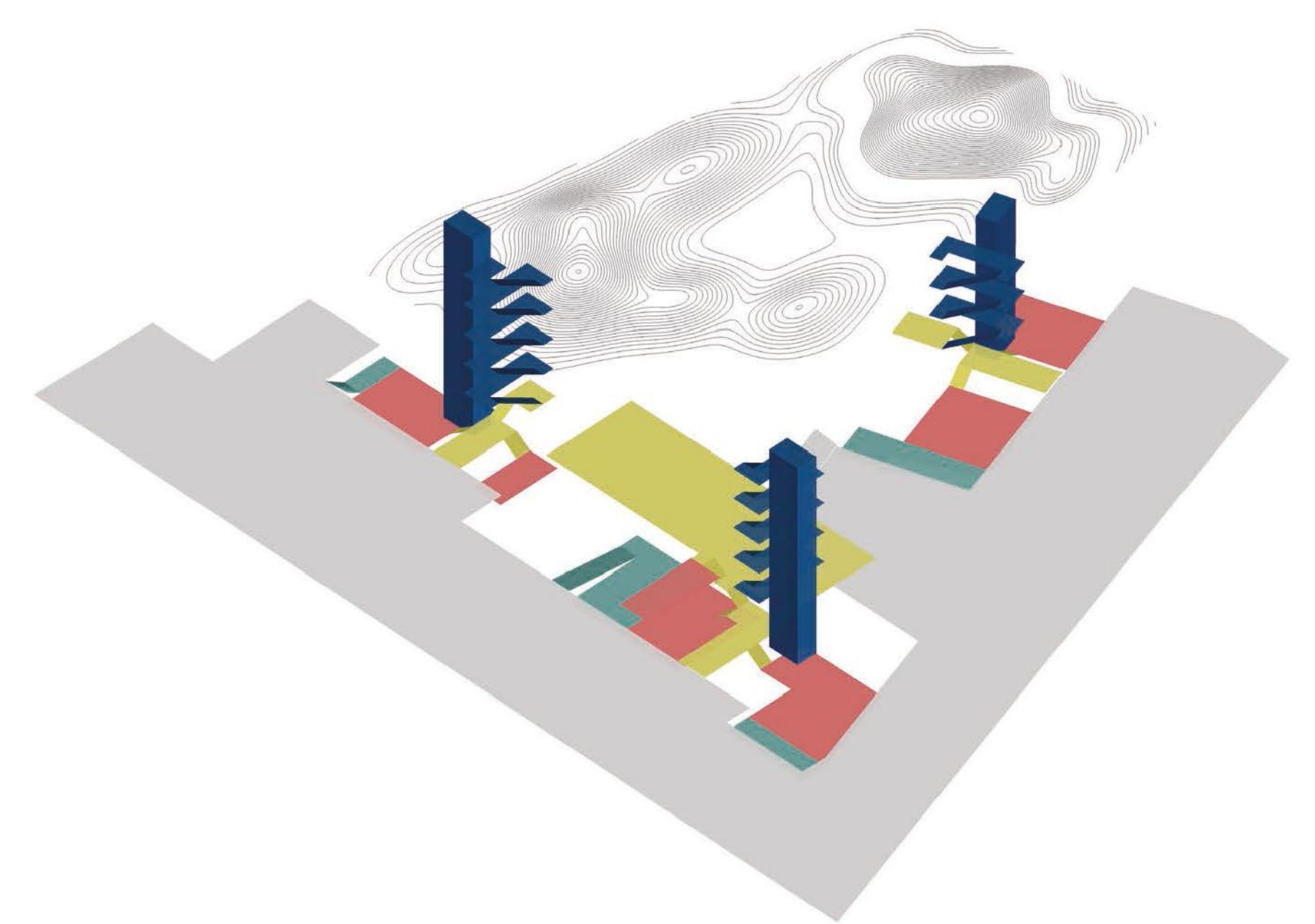
**Fußboden:**  
 Zementestrich isoliert 8 cm  
 Trittschalldämmung 4 cm  
 Blumengießanlage 20 cm  
 Blumengießanlage 20 cm  
 Magnesium 2 cm  
 Schutzschicht 2 cm  
 nach Bodenbeschaffenheit 40 cm



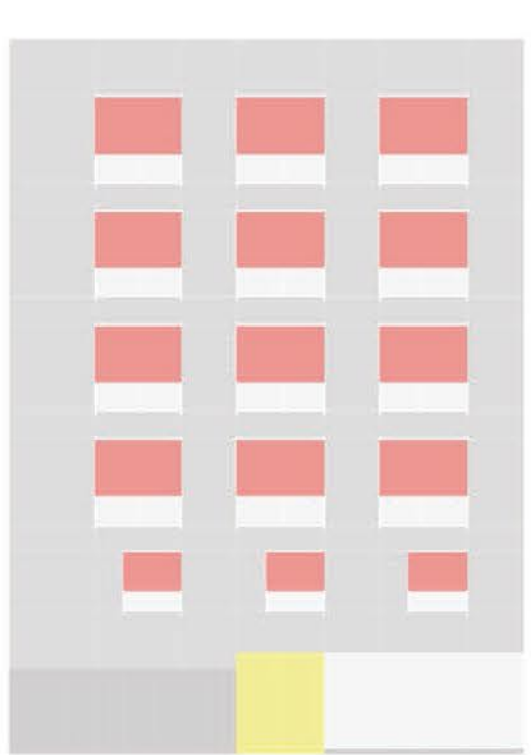
Schnitt B-B 1:50



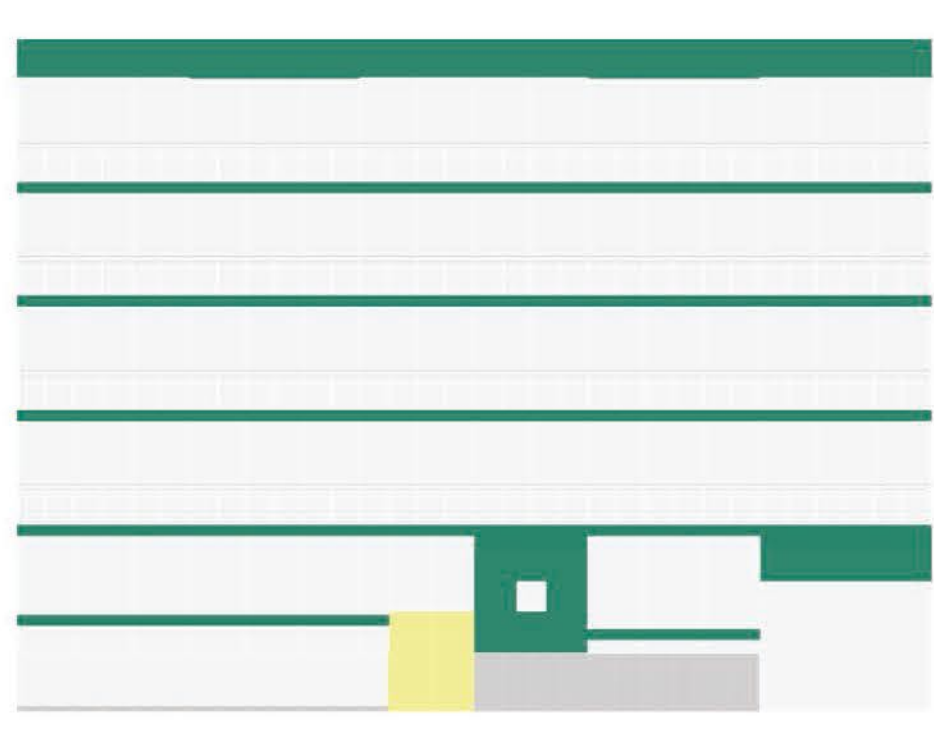
UG



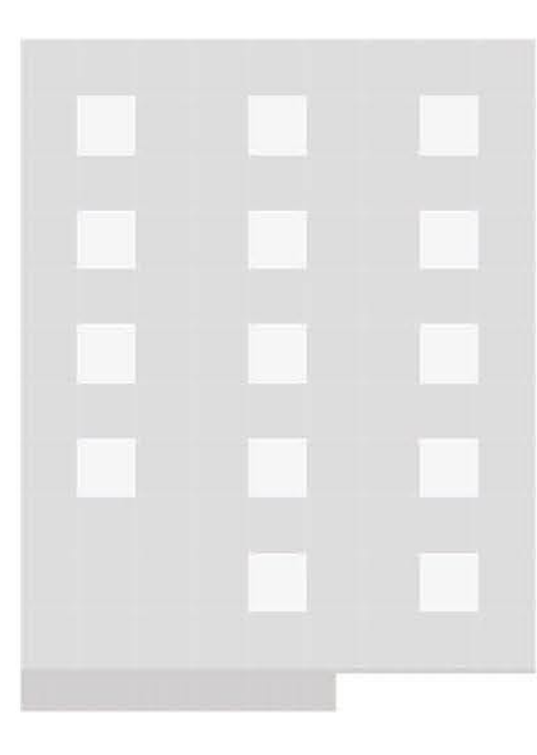
Erschließungsplastik



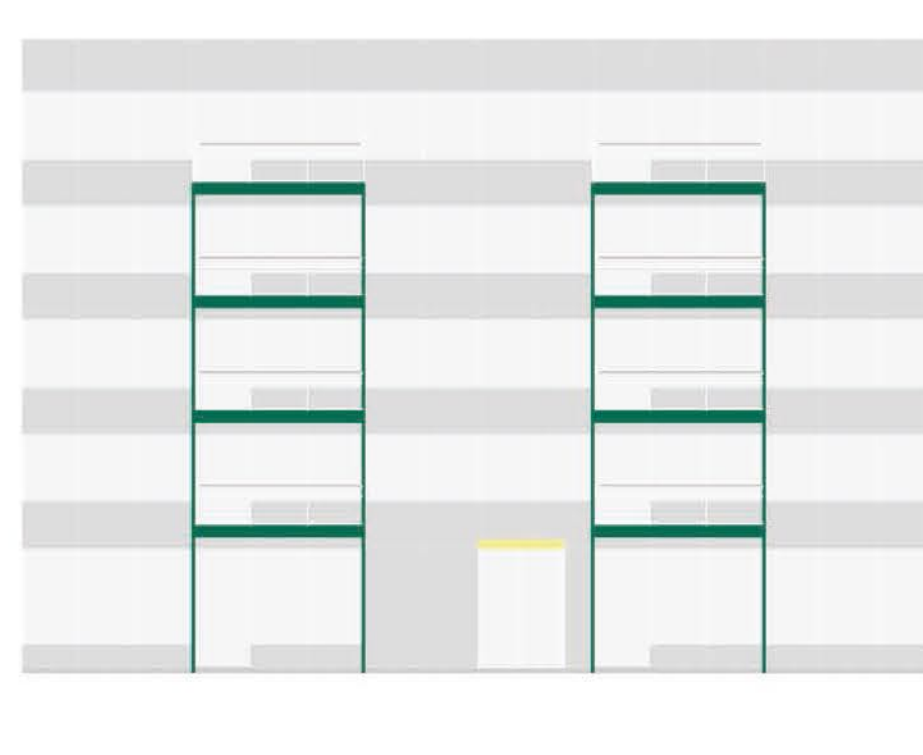
Haus A Süd



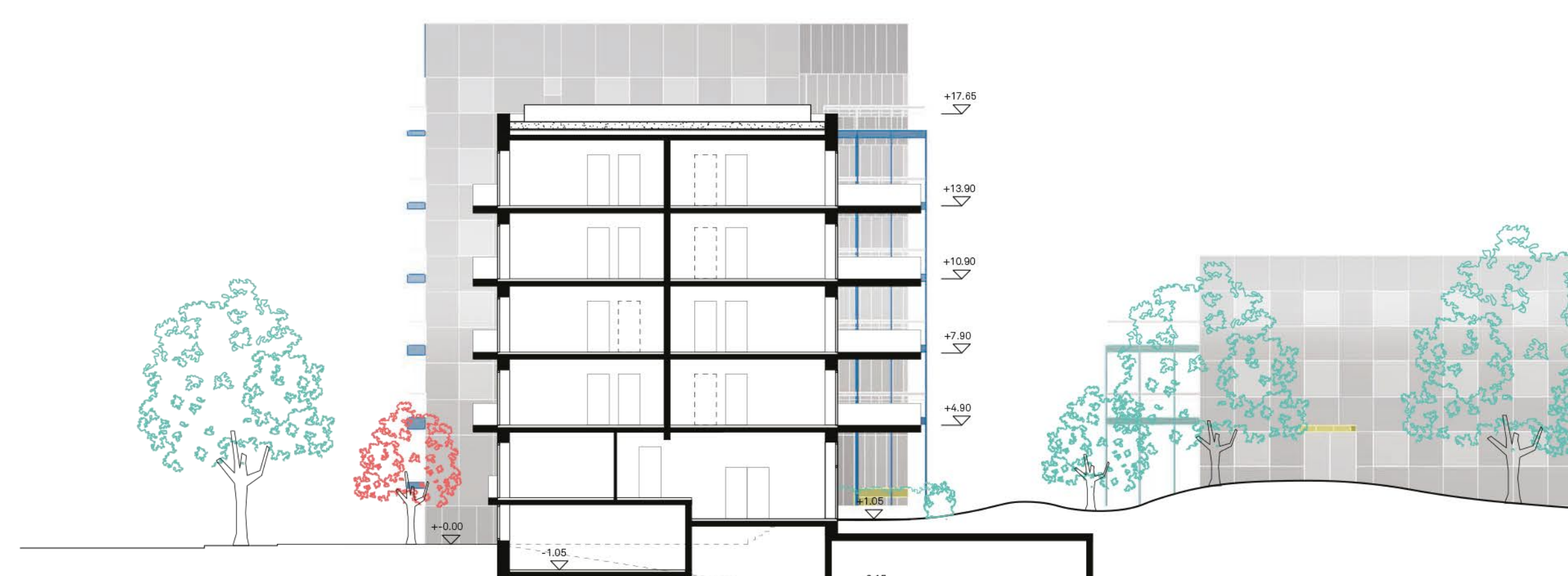
Ost



Nord



West



Schnitt A-A