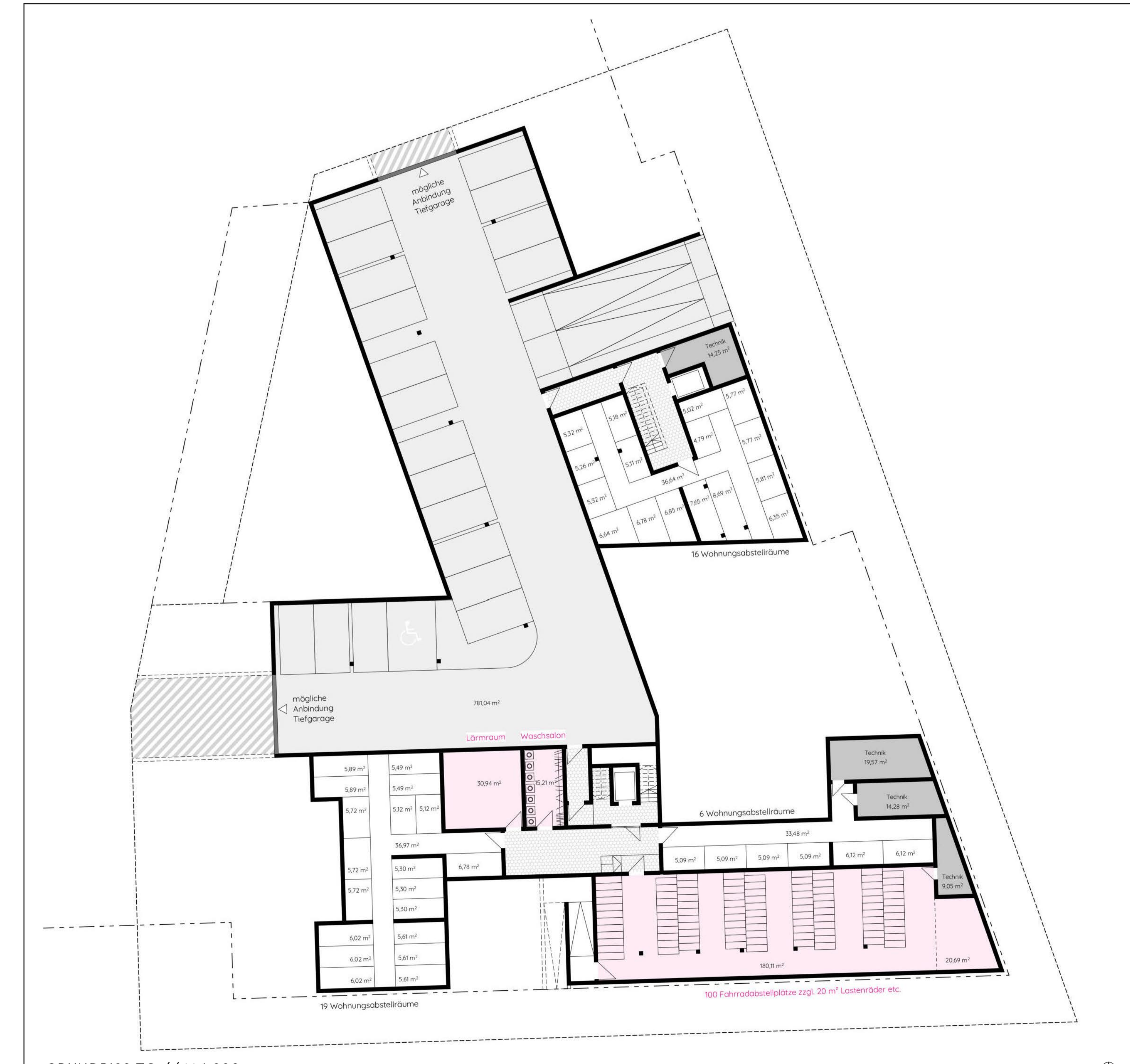
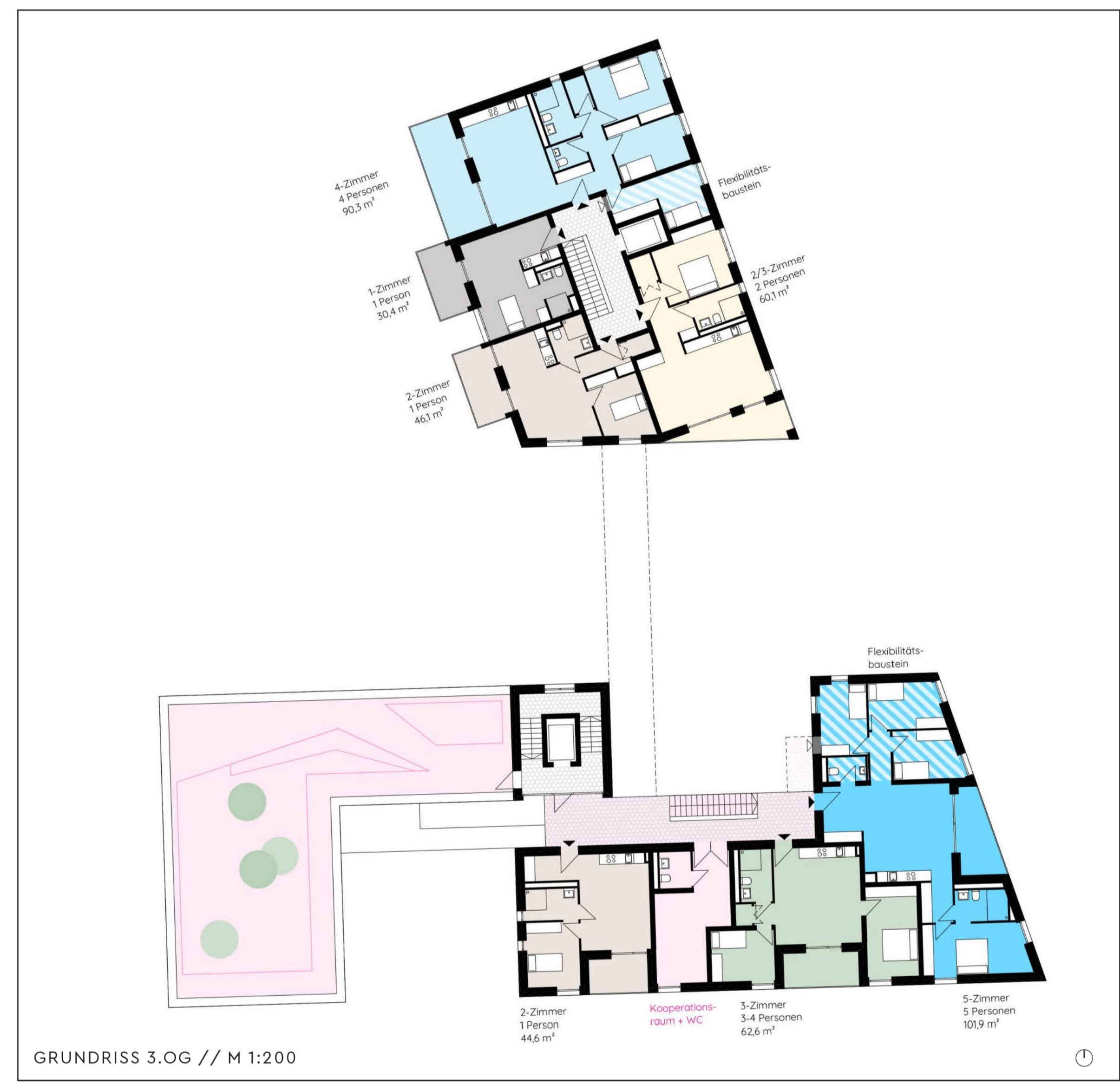
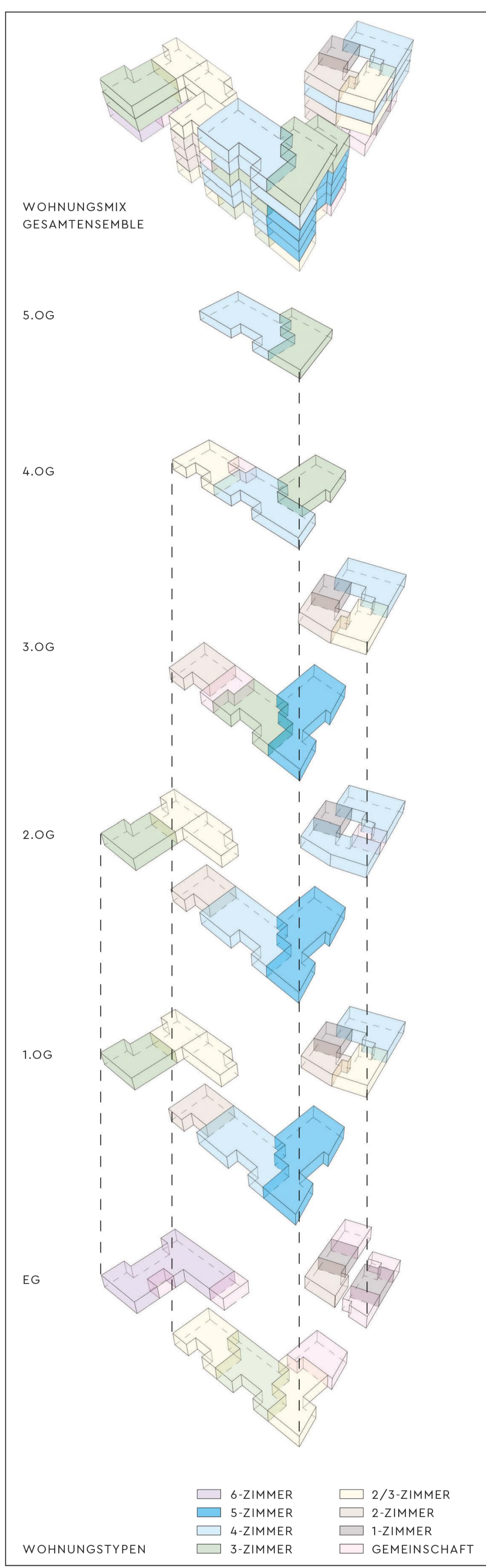
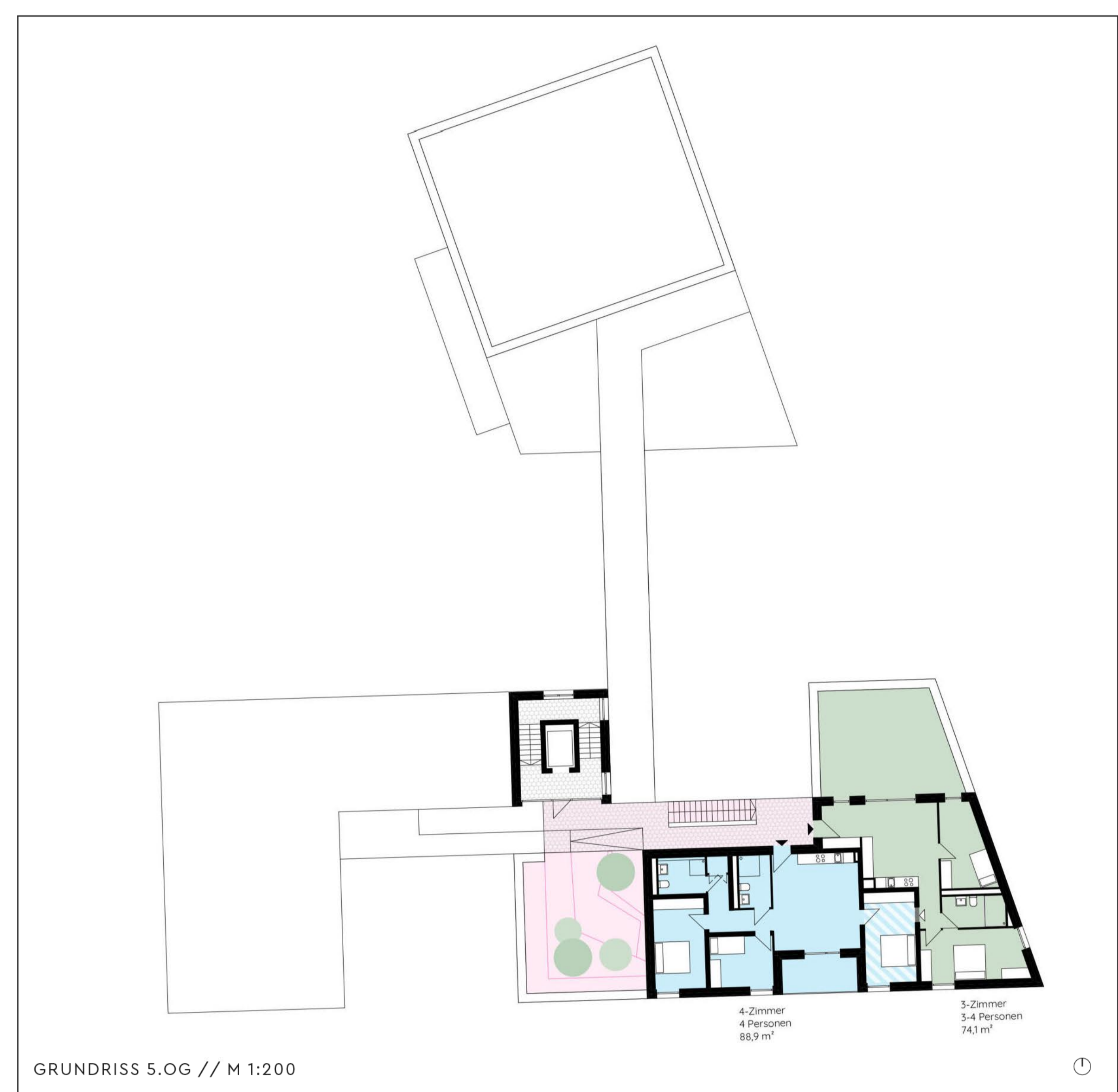
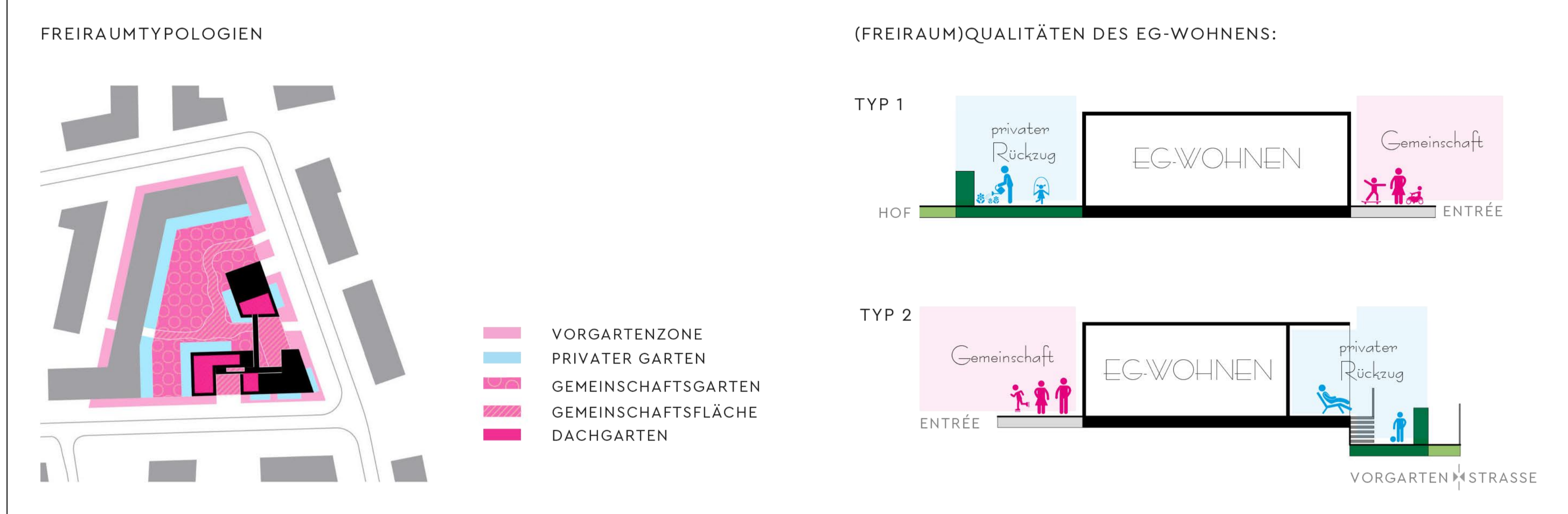
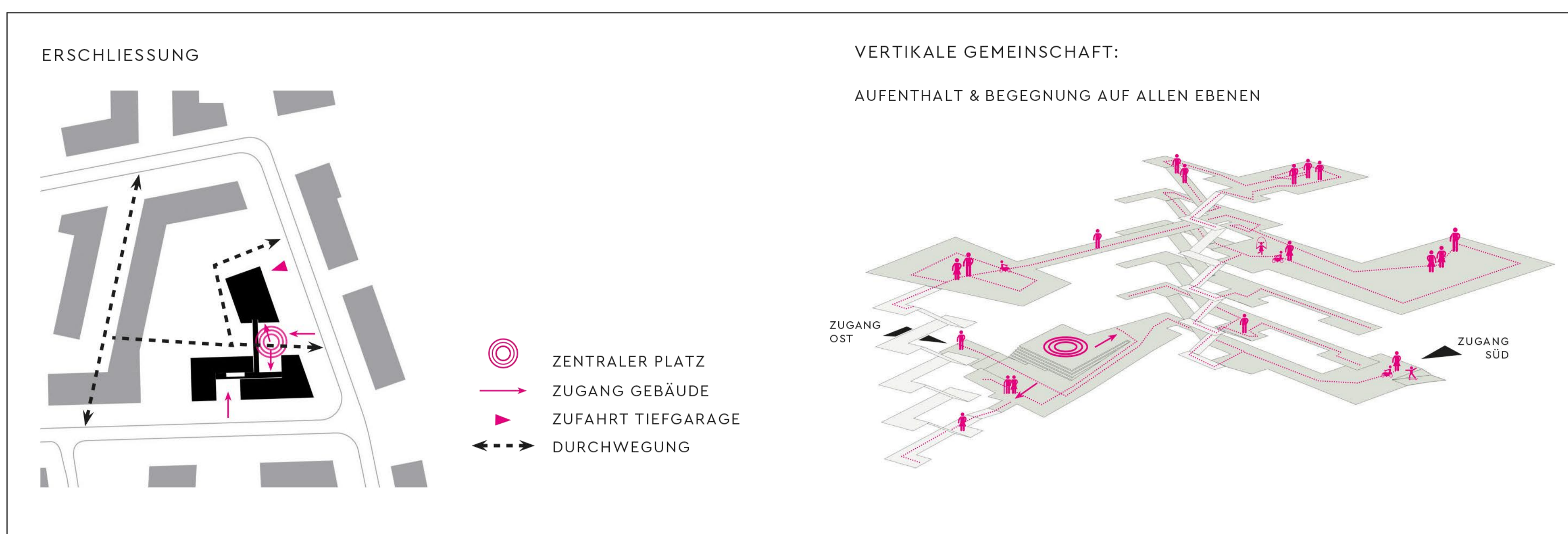
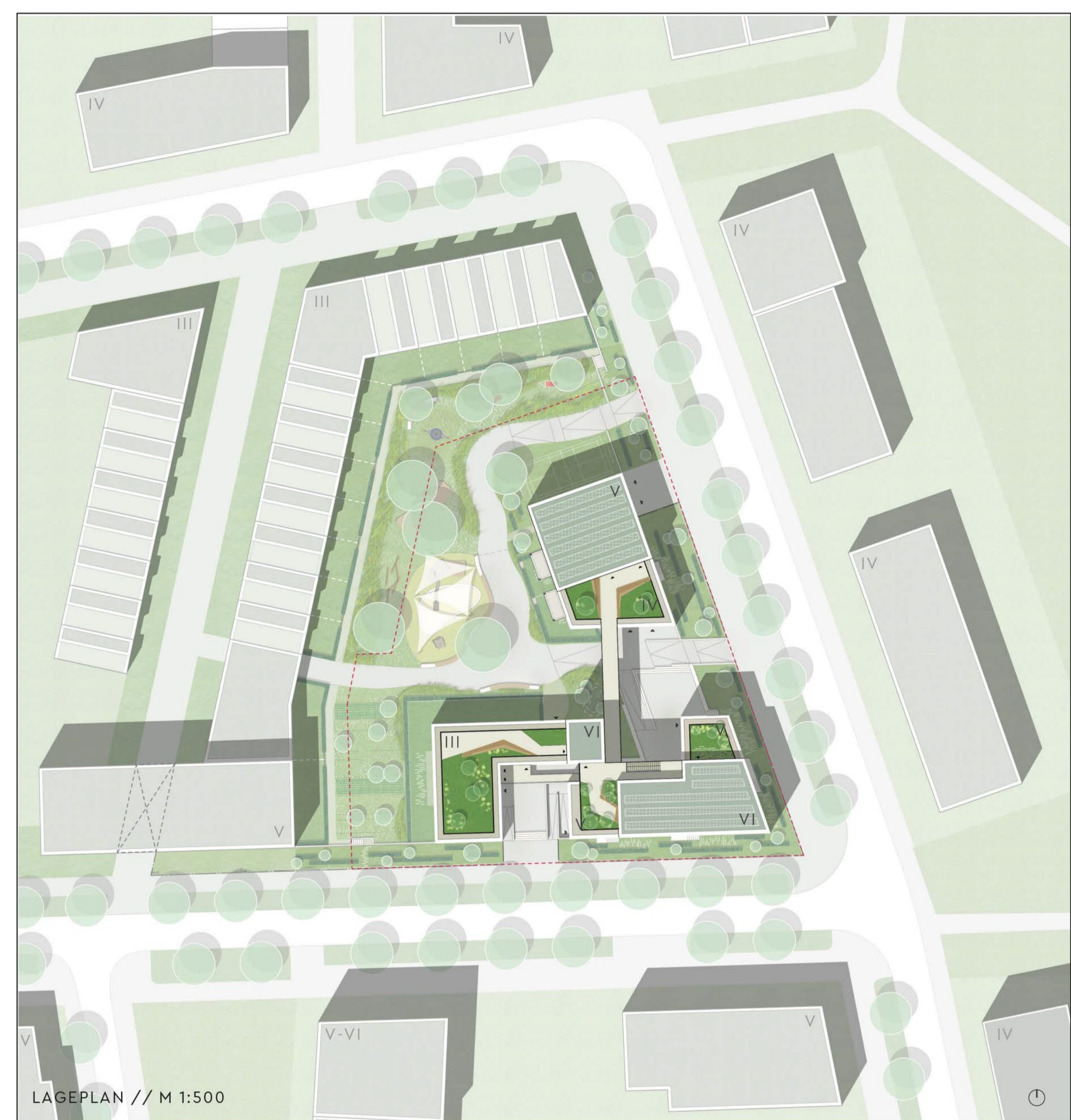


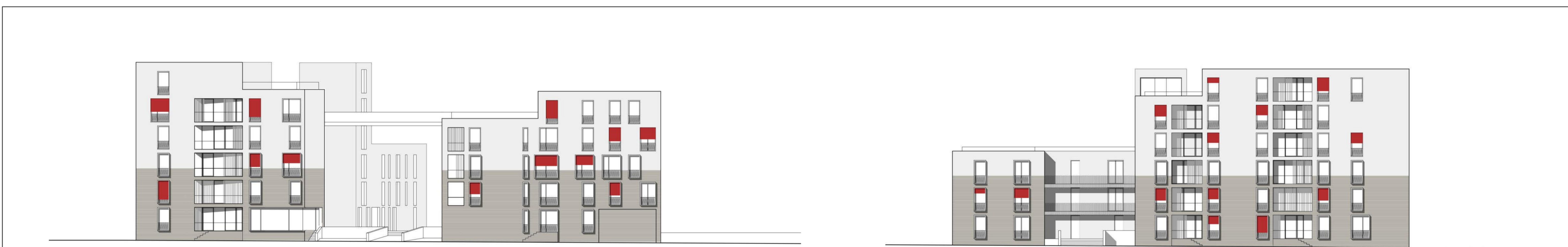
# DREI ZWOA OANS!

INDIVIDUALITÄT UND GEMEINSCHAFT UNTER DREI DÄCHERN





BLICK VON OSTEN...



ANSICHT OST // M 1:200

ANSICHT SÜD // M 1:200

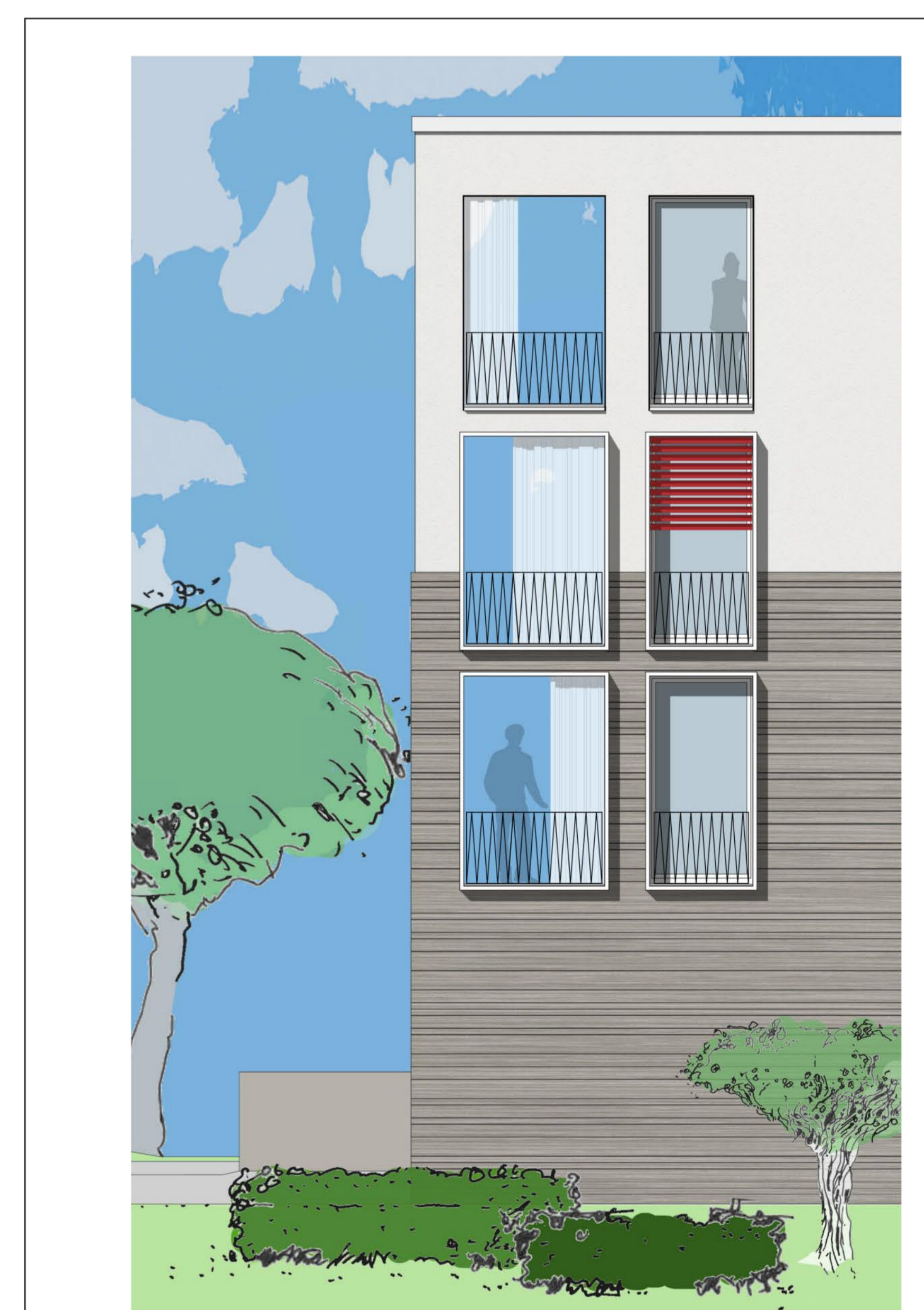


SCHNITT A-A' // M 1:200

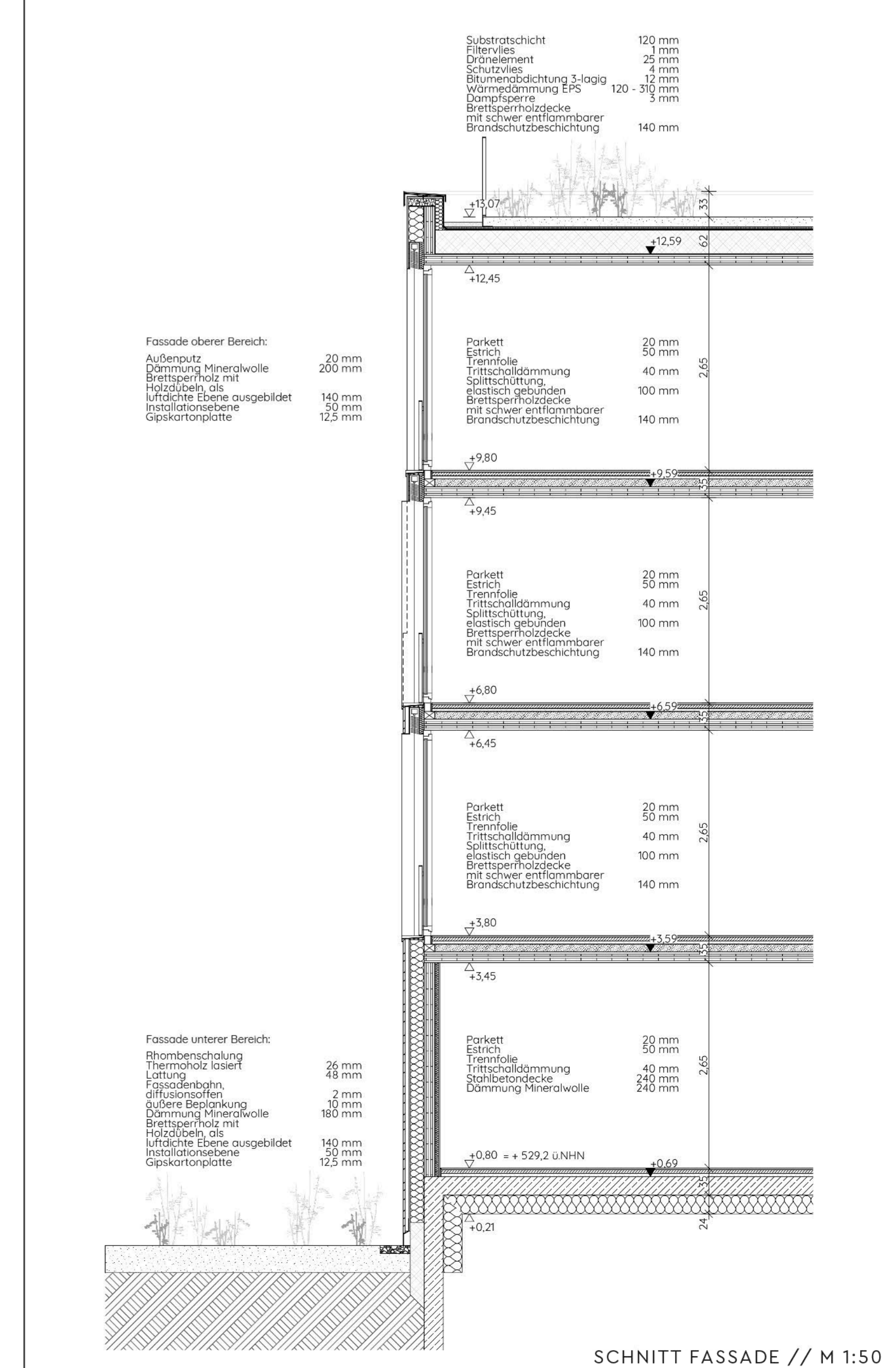
SCHNITT B-B' // M 1:200



GRUNDRISS 2.OG // M 1:100



TEILANSICHT FASSADE // M 1:50



SCHNITT FASSADE // M 1:50